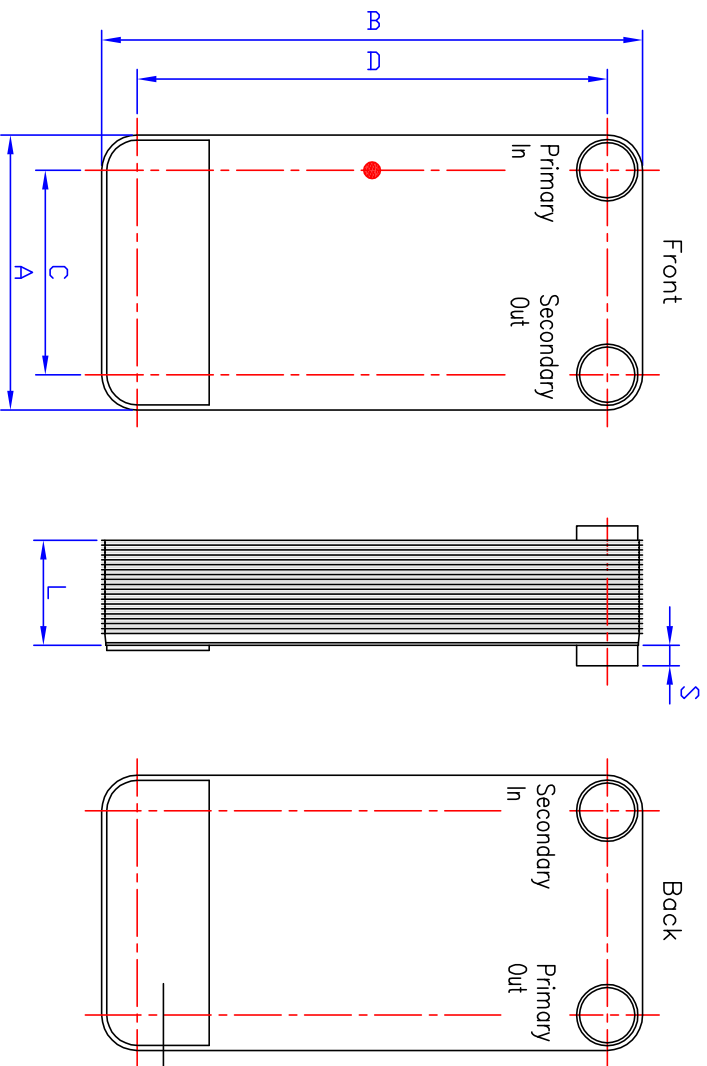


GEA WTT–Brazeed Plate Heat Exchanger – Special Version "GBS...–U/GBH...–U"
Two–Way Compound Heat Exchanger
to Double the Thermal Length

Diagramm of Circulation



additional
Reinforcement only:
GBS/GBH 800 1x2.5mm (only back)
GBS/GBH 900 2x2.5mm (front– + back side)

Type	Dimensions (mm)				max. no. of Plates	
GBS/GBH	A	B	C	D	L	
100M	74	204	40	170	7,7+2,30xN	50
200H	90	231	43	182	10,65+2,35xN	50
220H	90	328	43	279	10,65+2,35xN	50
240H	90	464	43	415	10,7+2,30xN	50
300H	124	173	73	120	10,65+2,35xN	50
400H	124	335	73	281	10,7+2,30xN	100
500H	124	532	73	478	10,7+2,25xN	100
700M	271	532	200	460	11,15+2,35xN	150
700L	271	532	200	460	11,15+2,35xN	150
800H	271	532	161	421	11,15+2,35xN	260
900H	271	802	161	690	11,15+2,35xN	260
1000H	386	875	237	723	20,6+2,35xN	360

Type	Design Limits*	Material		
GBS/GBH	Temperature	Pressure	Solder	Plates
GBS	–200...+200°C	30 bar	Copper	1.4401
GBH	–200...+150°C	45 bar	Copper	1.4401
	–200...+200°C	40 bar		

*Attention: Connections can reduce the design limits!

		Zachnungsname, Benennung, Werkstoff, Abmessungen usw.		Konstell., Modell-, Werkstoff.	
		Zachnungsnummer	Zachnungsname		Material
Gezeichnet	K. Vogt	Geprüft	Gräichen	Datum	
Firmenname GEA WTT GmbH Remsauer Str. 2a 04603 Nobitz – Wllichwitz Germany Phone: +49(0)3447–5539–0 / Fax: +49(0)3447–5539–30 www.geo–pht.com / info@geo–ecobraze.se sales@geowtt.com			Brazed Plate Heat Exchanger GB...–U GB...–U–0509,0509,01–E		

The manufacturer herewith certifies that construction, production and examination of his pressure vessel are in conformity with EU guideline 97/23/EC.